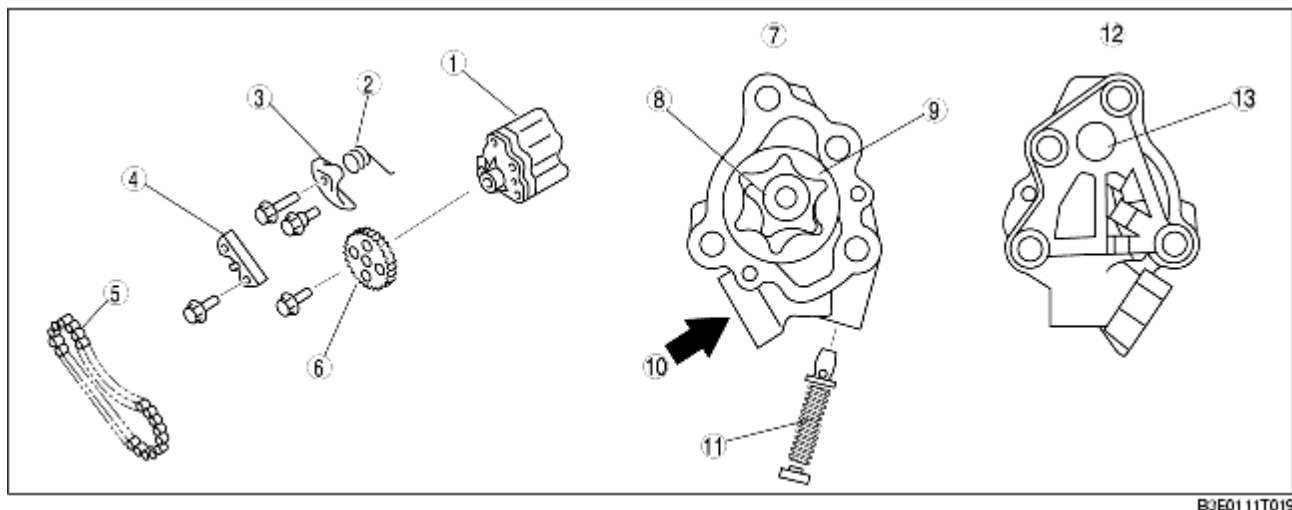


## OIL PUMP CONSTRUCTION [LF]

B3E011101008T11

- The oil pump is installed inside the engine front cover. The crankshaft drives the inner rotor through the oil pump chain and oil pump sprocket.
- The oil pump component consists of the oil pump sprocket, oil pump chain, oil pump chain guide, oil pump chain tensioner, and oil pump chain tensioner spring.
- An efficient and compact five-lobe epitrochoid and six-flank inner envelope type gear have been adopted on the oil pump.
- The oil pump consists of the inner and outer rotors, relief valve, and oil pump body.
- The oil pump cannot be disassembled. If there is an oil pump malfunction, replace it as a unit.



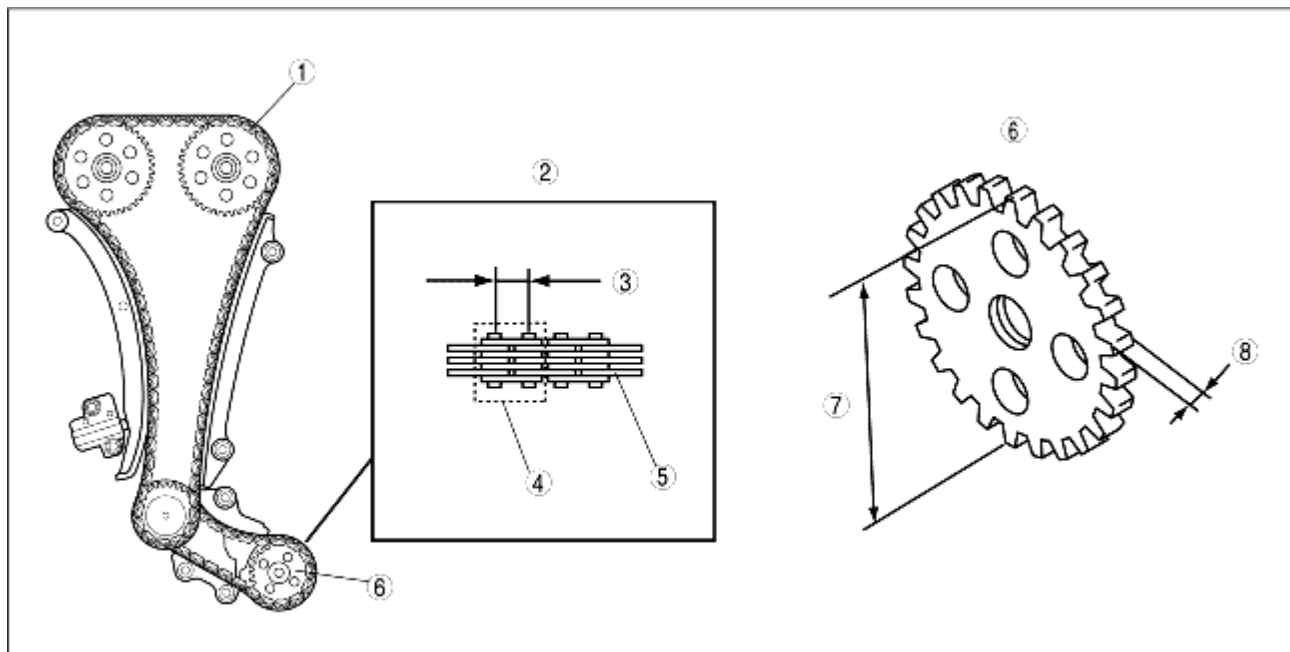
B3E01 11T019

1	Oil pump body (relief valve inside)
2	Oil pump chain tensioner spring
3	Oil pump chain tensioner
4	Oil pump chain guide
5	Oil pump chain
6	Oil pump sprocket
7	Front
8	Inner rotor
9	Outer rotor
10	Oil in
11	Relief valve component
12	Rear
13	Oil out

## Oil pump

Item	Engine speed [rpm]	Specification
Oil discharge pressure (approx. quantity) [Oil temperature: 100 °C {212 °F}]	1,500	129- 269 {1.32-2.74, 18.7-39.0}
(kPa {kgf/cm <sup>2</sup> , psi})	3,000	234-521 {2.39-5.31, 33.9-75.5}
Relief valve opening pressure (approx. quantity)	(kPa {kgf/cm <sup>2</sup> , psi})	500-600 {5.09-6.11, 72.6-87.0}

- A silent chain (link connecting type) has been adopted to the oil pump chain to reduce chain operation noise when the chain and the sprocket engage.
- The engine oil in the engine front cover lubricates the oil pump chain. The wear resistance has been improved by the pins constructing the oil pump chain.
- The oil pump sprocket is sinter hardened metals to improve durability.



B3E01 11T030

1	Timing chain
2	Oil pump driven chain
3	Pitch size
4	Pitch
5	Link
6	Oil pump sprocket
7	Outer diameter
8	Driven tooth width

#### Oil pump driven chain, oil pump sprocket

Item			Specification
Oil pump driven chain	Pitch size	(mm {in})	8 {0.3}
	Number of pitches		54
Oil pump sprocket	Outer diameter	(mm {in})	60.78 {2.392}

	Drive tooth width	(mm {in})	6.15 {0.242}
--	-------------------	-----------	--------------